

WC Connectors MACFIT, Flexible and Rigid

SECTION

5



WC Connectors

WC Connectors

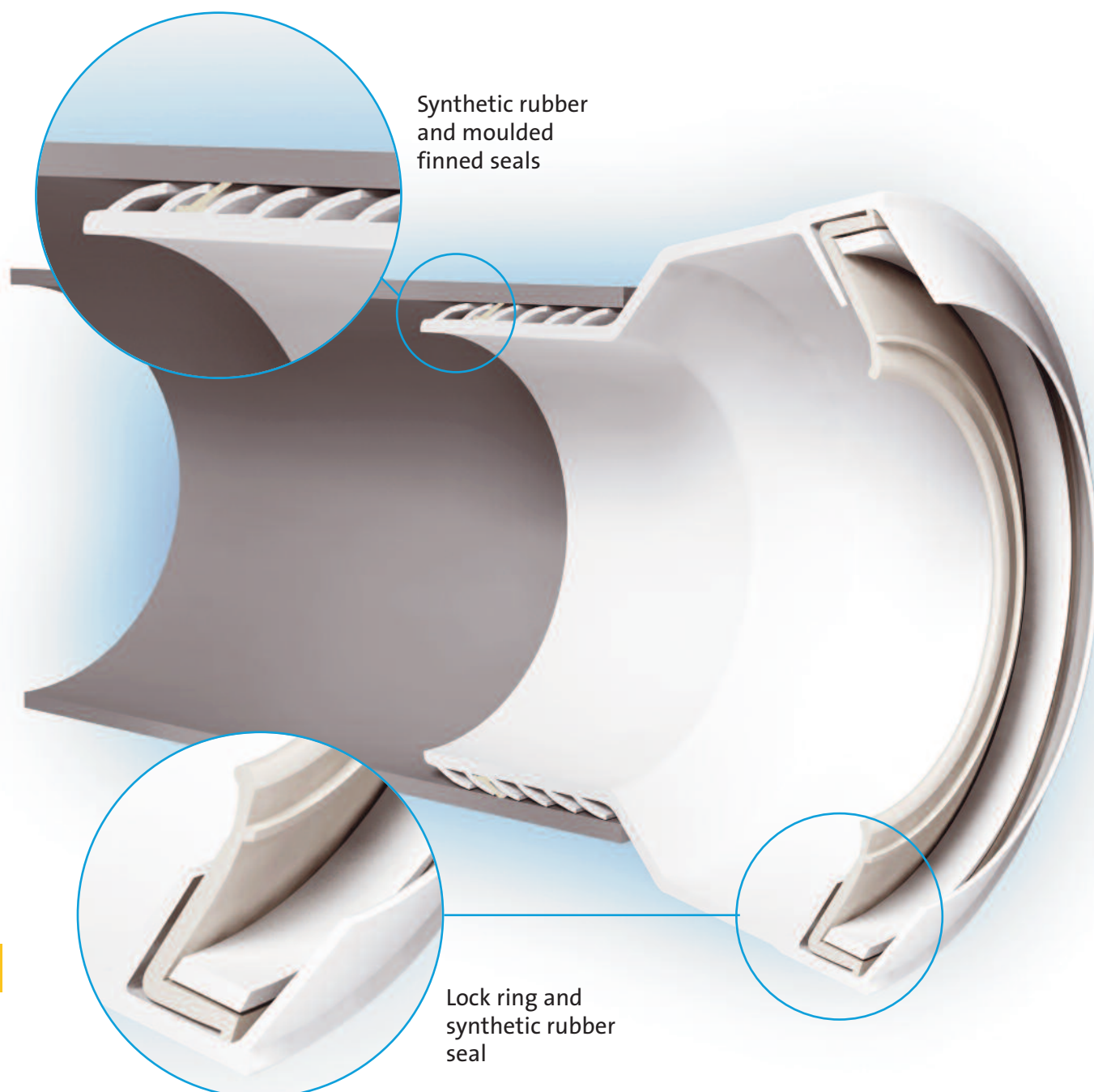
WC Connectors General

- M^cAlpine is the only European manufacturer to offer EVA (ethylene vinyl acetate), rigid polypropylene and flexible polypropylene WC connectors
- All outlets fit inside diameter pipe sizes as follows:
 - 110mm Plain End:** Ring seal socket of 110mm soil or underground pipe fittings
 - 4"/110mm:** PVC-U and cast iron
 - 3½"/90mm:** Cast iron
 - 3"/75mm:** PVC-U and cast iron
- Fixing instructions and dimensional leaflet for all WC connectors available on request

MACFIT

- MACFIT WC connectors are manufactured in EVA with synthetic rubber and moulded finned seals
- MACFIT incorporates a new 'lock ring' inlet seal (patent pending) to give a superior, tighter connection to the WC pan outlet
- European Patent No. 1655528

MACFIT WC Connectors





Straight
97-107mm Inlet
4"/110mm Outlet

Code **MAC-1**



Straight
97-107mm Inlet
3½"/90mm Outlet

Code **MAC-3**



Straight
97-107mm Inlet
3"/75mm Outlet

Code **MAC-3C**



20mm Offset
97-107mm Inlet
4"/110mm Outlet

Code **MAC-4**



40mm Offset
97-107mm Inlet
4"/110mm Outlet

Code **MAC-4A**



14° Angle
97-107mm Inlet
4"/110mm Outlet

Code **MAC-7A**



90° Bend
97-107mm Inlet
4"/110mm Outlet

Code **MAC-8**



90° Bend (Long)
97-107mm Inlet
4"/110mm Outlet

Code **MAC-8L**



Straight Extension
Adjustable Length
4"/110mm Outlet

Code **MAC-EXTA**



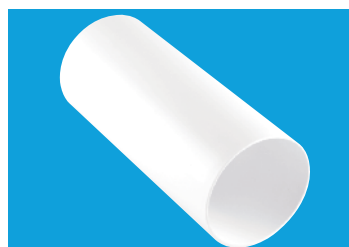
Straight Extension
Adjustable Length
3½"/90mm Outlet

Code **MAC-EXTB**



Straight Extension
Adjustable Length
3"/75mm Outlet

Code **MAC-EXTC**



Linking Connector
Adjustable Length
(Polypropylene)

Code **MACLINK**

Short Straight Connector

- Connector can be used where the soil pipe has already been installed with only the final fixing of the WC pan to be connected
- Soft synthetic rubber inlet connection secured by a worm drive hose clip provides a secure and reliable connection to the WC pan spigot

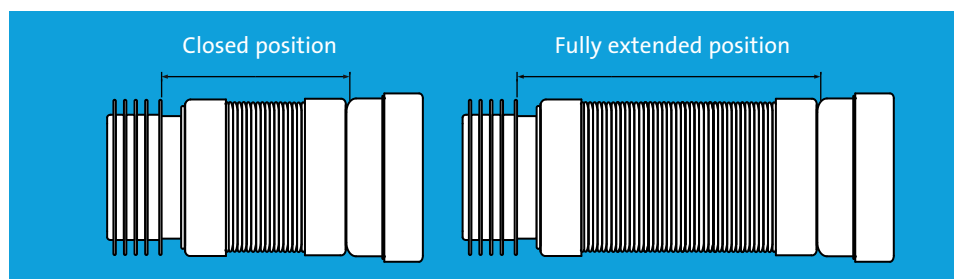


Overall length of
connector 88mm
97-107mm Inlet -
4"/110mm Outlet

Code **MAC-1-BTW**

Flexible WC Connectors

- There is no British Standard for flexible WC connectors but MCAlpine connectors comply to German Standard DIN 1389:2000-05 for flexible WC connectors
- Tested by German Testing House LGA, certificate number 572125072a and other testing houses. Tests prove conclusively that there is no build-up of sediment and the product is perfectly fit for purpose



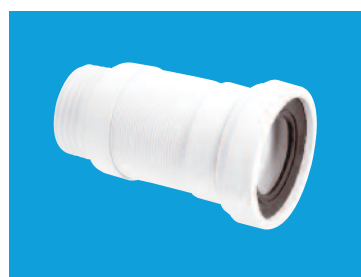
97-107mm Inlet 4"/110mm Outlet

Closed 170mm	Extended 410mm	Closed 140mm	Extended 290mm	Closed 100mm	Extended 160mm
WC-F26R		WC-F23R		WC-F18R	



97-107mm Inlet 4"/110mm Outlet 1¼" Universal Vent Boss

180mm	380mm	150mm	280mm	
WC-F26RV		WC-F23RV		-



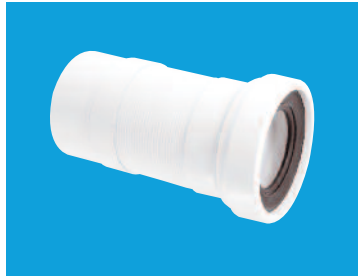
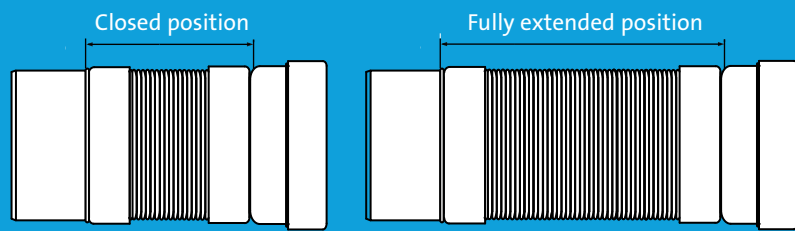
97-107mm Inlet 3½"/90mm Outlet

170mm	410mm	140mm	290mm	100mm	160mm
WC-F26S		WC-F23S		WC-F18S	



97-107mm Inlet 3½"/90mm Outlet 1¼" Universal Vent Boss

180mm	380mm	150mm	280mm	
WC-F26SV		WC-F23SV		-

**97-107mm Inlet 110mm Plain End Outlet**

Closed 160mm > Extended 380mm Closed 130mm > Extended 260mm

WC-F26P**WC-F23P**

-

**97-107mm Inlet 110mm Plain End Outlet 1 1/4" Universal Vent Boss**

170mm > 380mm 140mm > 260mm

WC-F26PV**WC-F23PV**

-

90° Flexible WC Connectors**97-107mm Inlet 4"/110mm Outlet**

Closed 190mm > Extended 270mm

Code **WC-CON8F18****97-107mm Inlet 4"/110mm Outlet**

220mm > 400mm

Code **WC-CON8F****97-107mm Inlet 4"/110mm Outlet 1 1/4" Universal Vent Boss**

220mm > 400mm

Code **WC-CON8FV****Flexible Extensions for WC Connectors****110mm Inlet 4"/110mm Outlet**

Closed 95mm > Extended 195mm

Code **EXTA-F****110mm Inlet 3 1/2"/90mm Outlet**

95mm > 195mm

Code **EXTB-F**

Flexible WC Connectors for Back to Wall WC Pan

Flexible WC Connectors for Back to Wall WC Pan

- Soft synthetic rubber inlet connection secured by a worm drive hose clip provides a secure and reliable connection to the WC pan spigot prior to the final placement against wall or furniture
- There is no British Standard for flexible WC connectors but M^cAlpine WC connectors comply to German Standard DIN 1389:2000-05 for flexible WC connectors

- Tested by German Testing House LGA, certificate number 572125072a and other testing houses. Tests prove conclusively that there is no build-up of sediment and the product is perfectly fit for purpose



Closed 150mm

Extended 310mm

97-107mm Inlet - 4"/110mm Outlet

Code

WC-F21R



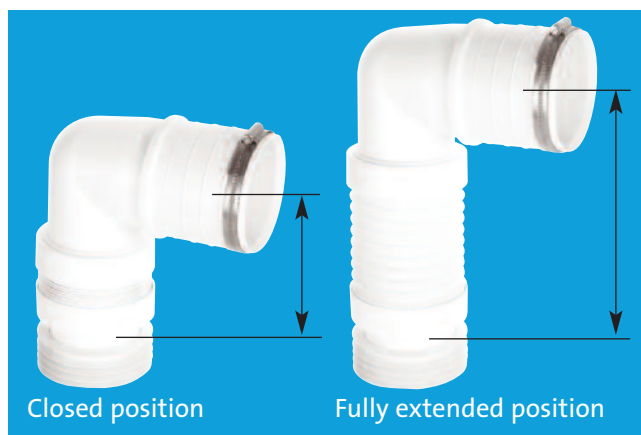
97-107mm Inlet - 3½"/90mm Outlet

Code

WC-F21S

Patents pending

90° Short Bend in vertical position



Closed position

Fully extended position

Closed 170mm

Extended 250mm

97-107mm Inlet - 4"/110mm Outlet

Code

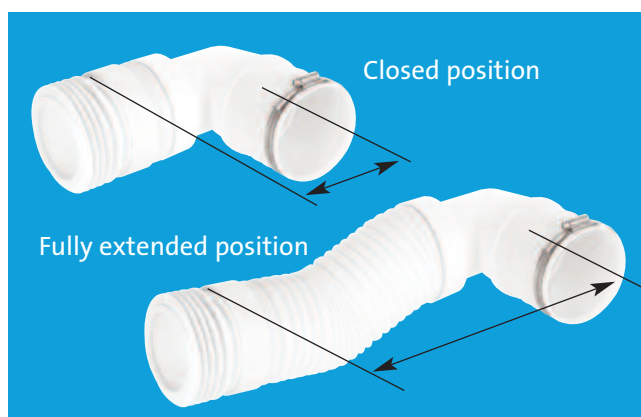
WC-CON8F18-BTW

97-107mm Inlet - 3½"/90mm Outlet

Code

WC-CON8F18-S-BTW

90° Long Bend in horizontal position



Closed position

Fully extended position

Closed 230mm

Extended 480mm

97-107mm Inlet - 4"/110mm Outlet

Code

WC-CON8F-BTW

97-107mm Inlet - 3½"/90mm Outlet

Code

WC-CON8F-S-BTW

■ Dimensional leaflet available on request



Straight
97-107mm Inlet
4"/110mm Outlet

Code **WC-CON1**



Straight with Vent Boss
97-107mm Inlet
4"/110mm Outlet

Code **WC-CON1V**



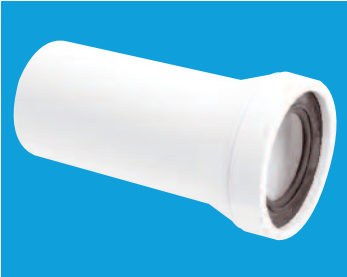
Straight Adjustable Length
97-107mm Inlet
4"/110mm Outlet

Code **WC-CON2**



Straight Adjustable Length
97-107mm Inlet
3 1/2"/90mm Outlet

Code **WC-CON2B**



Straight Adjustable Length
97-107mm Inlet
110mm Plain End Outlet

Code **WC-CON3**



20mm Offset
97-107mm Inlet
4"/110mm Outlet

Code **WC-CON4**



40mm Offset
97-107mm Inlet
4"/110mm Outlet

Code **WC-CON4A**



40mm Offset
97-107mm Inlet
110mm Plain End Outlet

Code **WC-CON4B**



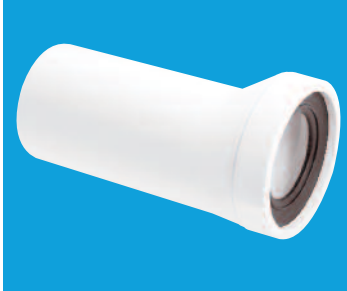
20mm Offset Adjustable Length
97-107mm Inlet
4"/110mm Outlet

Code **WC-CON5**



20mm Offset Adjustable Length
97-107mm Inlet
3 1/2"/90mm Outlet

Code **WC-CON5B**



10mm Offset Adjustable Length
97-107mm Inlet
110mm Plain End Outlet

Code **WC-CON6**



14° Angle Adjustable Length
97-107mm Inlet
4"/110mm Outlet

Code **WC-CON7**



14° Angle
97-107mm Inlet
4"/110mm Outlet

Code **WC-CON7A**



14° Angle Adjustable Length
97-107mm Inlet
3 1/2"/90mm Outlet

Code **WC-CON7B**



45° Angle
97-107mm Inlet
4"/110mm Outlet

Code **WC-CON16**

Rigid WC Connectors



90° Bend
Adjustable Length
97-107mm Inlet
4"/110mm Outlet

Code **WC-CON8**



90° Space Saving
Bend
Adjustable Length
97-107mm Inlet
4"/110mm Outlet

Code **WC-CONQ**



90° Bend
Adjustable Length
with Vent Boss
97-107mm Inlet
4"/110mm Outlet

Code **WC-CON8V**



90° Space Saving
Bend
Adjustable Length
97-107mm Inlet
110mm Plain End
Outlet

Code **WC-CONQP**



90° Bend
Adjustable Length
Extended Inlet
97-107mm Inlet
4"/110mm Outlet

Code **WC-CON8E**

Extension Pieces



Straight Extension
Adjustable Length
4"/110mm Outlet

Code **WC-EXTA**



90° Bend
Adjustable Length
97-107mm Inlet
110mm Plain End
Outlet

Code **WC-CON9**



Straight Extension
Adjustable Length
3 1/2"/90mm Outlet

Code **WC-EXTB**



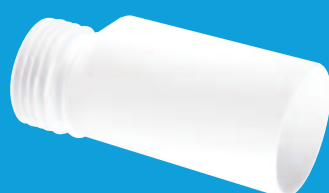
90° Bend
Adjustable Length
with Vent Boss
97-107mm Inlet
110mm Plain End
Outlet

Code **WC-CON9V**



10mm Offset
Extension
Adjustable Length
4"/110mm Outlet

Code **WC-EXTC**



10mm Offset
Extension
Adjustable Length
3 1/2"/90mm Outlet

Code **WC-EXTD**

Straight Telescopic WC Socket Extension

- Short telescopic socket extension connector to fit the socket of any MACFIT, Rigid or Flexible WC connector
- Can extend a WC connector already installed and requiring alteration before final placement to the WC pan
- Provides adjustment to the required length where soil pipe already installed



Overall length of telescopic socket extension piece
133mm

Code

WC-CON-EXT

WC Connector Accessories

Boss Pipe for use with WC Connectors

- Finned seal spigot for internal connection to cast iron, plastic or clay 4"/110mm pipe
- Ideal for low level connections



3½"/90mm x 4"/110mm Connector with 'O' seal socket to fit any M^CAlpine rigid or flexible WC connector with 4"/110mm rubber outlet seal when rubber seal is removed. With 1½" universal pipe boss including blanking cap. *As illustrated opposite with WC-CON8 (cut down to required length)*

Code

WC-BP1

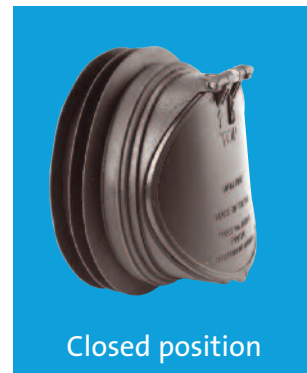


Anti Cross-Flow and Rodent Barrier Valve

- Will prevent cross-flow if fitted to WC pans that are installed back to back
- For use where special measures are necessary for control of rodents as recommended in Approved Document H1 The Building Regulations 2000 (2002 edition)
- Manufactured in black polypropylene to prevent light penetration
- Deters rodents from entering building through WC
- For use with any M^CAlpine rigid or flexible WC connector with 4"/110mm rubber outlet seal
- Can be installed in horizontal or vertical position



Open position



Closed position

Code

ARB-1

WC Connector Wall Flange



To fit over Rigid WC Connector with 4"/110mm Rubber Seal Outlet

Code

WC17-90

To fit over 4"/110mm Soil Pipe or Rigid WC Connectors with Plain End Outlet

Code

WC17-110

To fit over Collar of Flexible WC Connector

Code

WC17-114

WC Frame Connector Kit



WC Frame Connector Kit comprises WC connector with 90mm end, 110mm outlet seal, flush pipe with finned seal connector and fixing bolts and caps. Suitable for in-wall WC frames

Code

FPKIT-3